



MONTHLY MEMBERSHIP PROGRESS REPORT

District 9 NC

Results as of: 03/31/2018

GMT: MICHAEL MOLENDIA

LOCATION IOWA

GMT CA

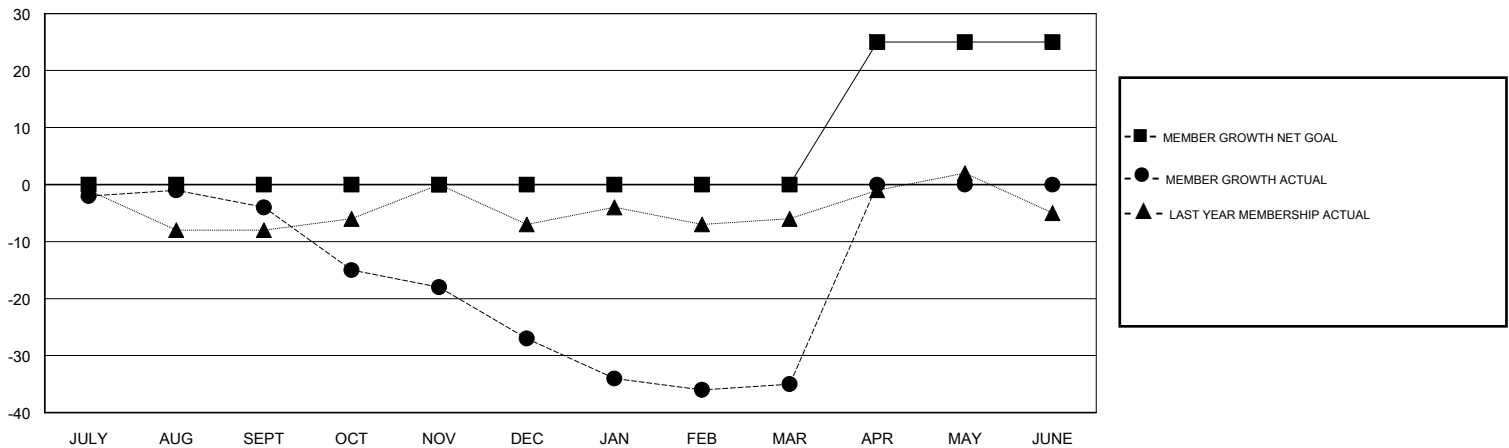
| Clubs | | | |
|-----------------------|---------------|-----------|---------------|
| RESULTS FOR 2017-2018 | | | |
| QUARTER | NEW CLUB GOAL | NEW CLUBS | DROPPED CLUBS |
| JULY/AUG/SEPT | 0 | 0 | 0 |
| OCT/NOV/DEC | 0 | 0 | 1 |
| JAN/FEB/MAR | 0 | 0 | 0 |
| APR/MAY/JUNE | 1 | 0 | 0 |

| Members | | | |
|-----------------------|------------------------|----------------------|--|
| RESULTS FOR 2017-2018 | | | |
| QUARTER | MEMBER GROWTH NET GOAL | MEMBER GROWTH ACTUAL | DROPPED MEMBERS ACTUAL (including transfers) |
| JULY/AUG/SEPT | 0 | 15 | 17 |
| OCT/NOV/DEC | 0 | 18 | 39 |
| JAN/FEB/MAR | 0 | 18 | 25 |
| APR/MAY/JUNE | 25 | 0 | 0 |

GOALS AND ACTUAL NEW CLUBS CUMULATIVE



GOALS AND ACTUAL MEMBERS CUMULATIVE



| | | |
|---|---|--|
| DROPPED CLUBS: 1 | 19 CLUBS OF 46 ADDED 1 OR MORE NEW MEMBERS | <u>GENDER DISTRIBUTION</u> MALE 908 (78.07%) FEMALE 255 (21.93%) Women Percentage Fiscal Year Goal: 23% |
| <u>DROPPED MEMBERS</u> DECEASED 15 CLUB CANCELLED 9 OTHER 57 TOTAL 81 | CLICK HERE FOR CUMULATIVE MEMBERSHIP DATA | TOTAL FAMILY UNIT MEMBERS 177 FAMILY MEMBERS PAYING HALF DUES 89 |